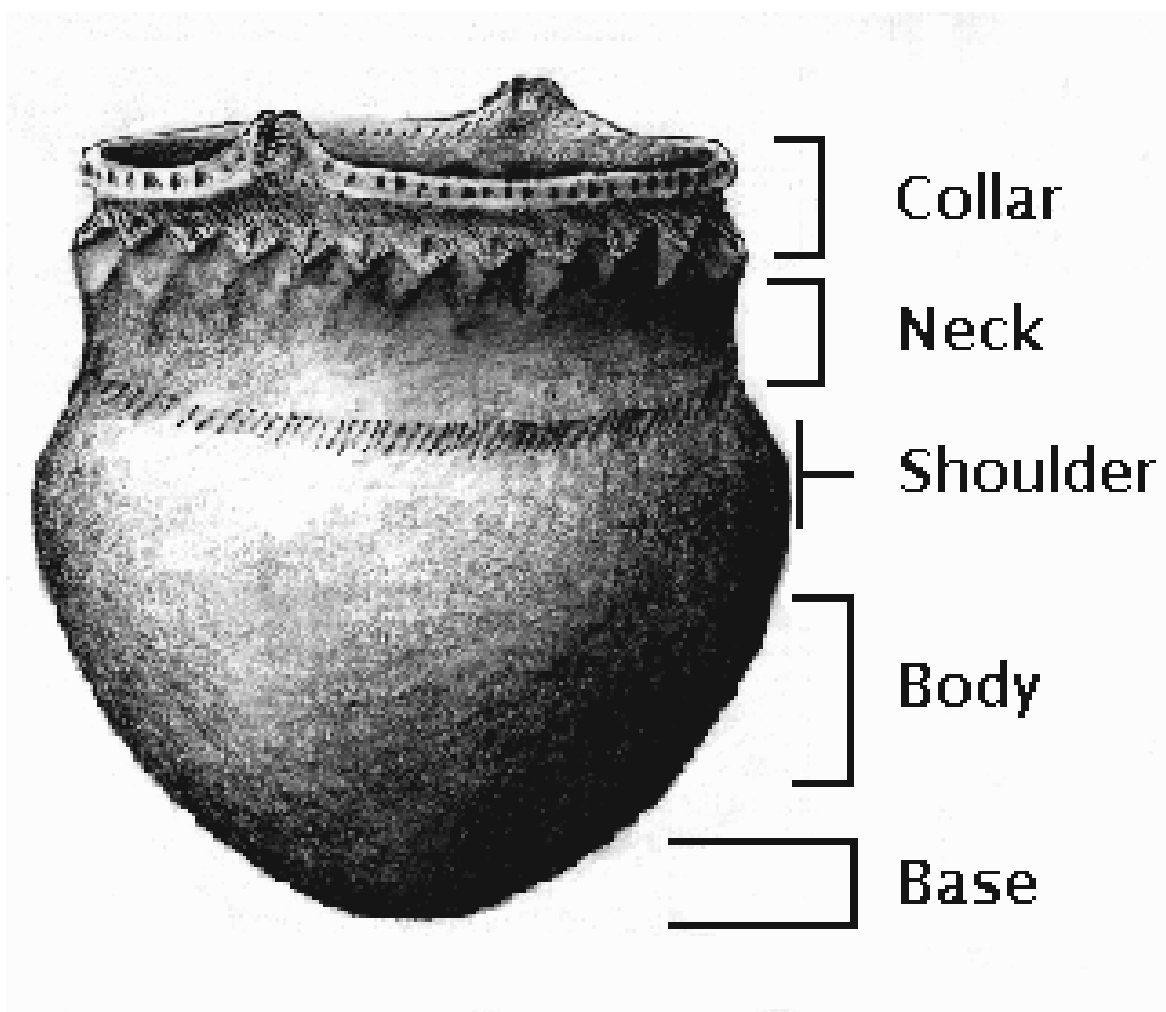


Ceramic Glossary



Laboratory of Archaeology

University of British Columbia



<i>ANTHRO\ZOOMORPHIC</i>
Describes object with human and/or animal features.
<i>APPLIQUÉ</i>
When ceramic is applied to an object. It can be applied anywhere on the object surface.

	<i>BEAD/PENDANT</i>
	Small, central bi-conical perforation, made from bone, shell, ceramic, glass, or stone. See Appendix E for measurements.
	Descriptors: Appliqué, Burnished/Polished, Burnt, Decorated, Decorated Anthro/Zoomorphic, Excised, Grooved, Incised, Maker's Mark, Perforated, Raised Relief

	<i>BEAD, DISC</i>
	Usually round flat and perforated only once. Radius is less than the thickness. See Appendix E for how to measure.
	Descriptors: Polished, Perforated

	<i>BOWL</i>
	Round dish used for holding liquids, foods, etc.
	Descriptors: Appliqué, Base (Flat, Footed, Ring), Burnished/Polished, Burnt, Cord Impressed, Corrugated, Decorated, Decorated Anthro/Zoomorphic, Excised, Grooved, Incised, Maker's Mark, Perforated, Raised Relief, Sherd (Base, Body, Rim), Vessel.

	<i>BASE, FLAT</i>
	Describes an object with flat base.

	<i>BASE, FOOTED/PEDESTAL</i>
	Describes an object that has extra material added to base that forms a ring that flutes out toward end.


	<i>BASE, RING</i>
	When the base has extra material added to base that forms a ring.

	<i>BOTTLE</i>
	A vessel with a narrow opening. May have a handle
	Descriptors: Appliqué, Burnished/Polished, Burnt, Cord Impressed, Corrugated, Decorated, Decorated Anthro/Zoomorphic, Excised, Grooved, Incised, Maker's Mark, Perforated, Raised Relief, Sherd Basal, Sherd Handle, Sherd Rim, Vessel

	<i>BURNISHED</i>
	When the surface appears polished. Surface is smoothed with another piece of pottery, bone, or wood before it is fired


	<i>BRICK</i>
	A block of clay hardened by drying in the sun or burning in a kiln.
	Descriptors: Burnt, Decorated, Maker's Mark

	<i>BURNT</i>
	To show signs of being in contact with fire. Colour changes to black

	<i>BUTTON</i>
	Small perforated disk or knob for attaching to an article, such as clothing, that serves as a fastening device when slipped through a button hole or loop.
	Descriptors: Appliqué, Burnished/Polished, Burnt, Decorated, Decorated Anthro/Zoomorphic, Excised, Grooved, Incised, Maker's Mark, Perforated, Raised Relief

	<i>COILED</i>
	Description of pottery where layers of coils have been laid down and then worked together into an even wall.


	<i>CORRUGATED</i>
	Surface design on ceramic that has consistent rises and valleys that create a wave-like pattern.
	<i>CORD IMPRESSED</i>
	When cord has been pressed into the ceramic while it was drying. When the cord was taken away it left a marking on the surface of the vessel.
	<i>CUP</i>
	Round dish with handle used for holding liquids.
	Descriptors: Appliqué, Burnished/Polished, Burnt, Cord Impressed, Corrugated, Decorated, Anthro/Zoomorphic, Excised, Grooved, Incised, Maker's Mark, Perforated, Raised Relief, Vessel
	<i>DRILLED</i>
	Manufacturing technique to pierce or bore into object. Will produce depression with parallel sides.
	<i>DOLL</i>
	A toy representing a human
	<i>EARTHENWARE</i>
	A clay fired at low temperatures that does not become waterproof unless glazed. Earthenwares can be porous and therefore are not as strong as stonewares and porcelains. Earthenware glazes are usually very bright in colour. All pre-contact pottery from Canada is earthenware.
	<i>EXCISED</i>
	A surface incision when more material is taken away than left behind. Will give a raised relief effect.

	<i>FIGURINE</i>
	An ornamental figure.
	Descriptors: Appliqué, Burnished/Polished, Burnt, Decorated, Decorated Anthro/Zoomorphic, Excised, Grooved, Incised, Maker's Mark, Perforated, Raised Relief


	<i>GLAZED</i>
Glazes consist of glassy or metallic chemicals which are painted onto a vessel surface. When fired, the chemicals in the glaze vitrify and create a glassy surface which strengthens the vessel body.	

	<i>GROOVED</i>
Describes a line in surface of object wider than 2mm caused by abrading or incising.	

	<i>INCISED</i>
To cut a fine line into the surface less than 2mm wide.	

	<i>JAR</i>
	Wide mouth vessel that has or had a lid. The inside lip of jar will often be threaded. Jars will not have spouts.
	Descriptors: Appliqué, Burnished/Polished, Burnt, Cord Impressed, Corrugated, Decorated, Decorated Anthro/Zoomorphic, Excised, Grooved, Incised, Maker's Mark, Perforated, Raised Relief, Sherd Basal, Sherd Handle, Sherd Rim, Vessel.

	<i>LID</i>
Used to close a vessel.	
Descriptors: Appliqué, Burnished/Polished, Burnt, Cord Impressed, Corrugated, Decorated, Anthro/Zoomorphic, Excised, Grooved, Incised, Maker's Mark, Perforated, Raised Relief.	

	<i>MODELED</i>
	A manufacturing technique that indicates the object was created or sculpted by hand.

	<i>MAKER'S MARK</i>
	A letter, number, or symbol placed on an object by its maker to identify its creator or origin.

	<i>MOLDED</i>
	A manufacturing technique where the object was created by being pressed in a mold. Object will often indicate this process by the appearance of seams, however, sometimes the seams can be smoothed and will not be visible.

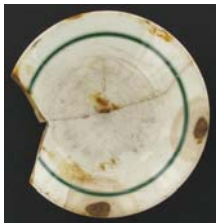
	<i>PAINTED/SLIP</i>
	When solid colouring matter has been applied to an object. Slip is when clay has been watered down to form a paste that is applied to the vessel as paint. Sometimes very hard to tell the difference between paint and slip.

<i>PENDANT: SEE BEAD</i>

	<i>PERFORATED</i>
	Describes an object that has a hole all the way through.

	<i>PINCHED</i>
	Starting with a ball of clay the potter creates a depression in the ball and forms a bowl shape through a combination of stroking and pinching the clay. Many coil-built pieces are constructed on top of a pinched bottom.

	<i>PIPE</i>
	Components consisting of a stem that was long and hollow and a bowl which held the material being smoked. For measurement directions see Appendix E.
	Descriptors: Appliqué, Burnished/Polished, Burnt, Decorated, Decorated Anthro/Zoomorphic, Excised, Grooved, Incised, Maker's Mark, Perforated, Raised Relief, Sherd Bowl, Sherd Stem.

***PLATE***

A shallow, usually circular dish, from which food is eaten or served.

Descriptors: Appliqué, Burnished/Polished, Burnt, Decorated, Anthro/Zoomorphic, Excised, Grooved, Incised, Maker's Mark, Perforated, Raised Relief, Vessel.

POLISHED: SEE BURNISHED***PORCELAIN***

Porcelain is a combination of kaolin, silica, and feldspar. A unique aspect of porcelain is that it can be worked as clay, but when fired properly reaches a state similar to glass. Primary qualities of porcelain are translucency and whiteness.

***POT***

A vessel where the opening is narrower than the body. See Appendix E for measurement directions.

Descriptors: Appliqué, Burnished/Polished, Burnt, Decorated, Decorated Anthro/Zoomorphic, Excised, Grooved, Incised, Maker's Mark, Perforated, Raised Relief, Vessel.

RAISED RELIEF


Molded to the actual body as raised areas in relief from the main body. Also raised by hand modeling. Mainly decorated in coloured enamels over the glaze.

SLAB


Molded to the actual body as raised areas in relief from the main body. Also raised by hand modeling. Mainly clay slabs are cut to shape and joined together using scoring and wet clay called slip. Slabs can be draped over or into forms, rolled around cylinders or built up into geometric forms. Large forms are difficult because of stresses on the seams and because the slab naturally sags.

***SHERD, BASAL***

Portions of a base are known as basal sherds. Vessel bases occur in three basic forms: pointed, rounded, or flat. Basal sherds are usually the thickest sherds from a vessel.

	<i>SHERD, BODY</i>
	<p>Body sherds typically lack morphological attributes and occur as either flat or slightly curved. The curvature of body sherds can serve as an indication of the general vessel shape.</p>

	<i>SHERD, HANDLE</i>
	<p>Handle sherds are the handle or part of handle from a vessel.</p>

	<i>SHERD, RIM</i>
	<p>Rims typically refer to the vessel opening. Rims are usually described in terms of their profile.</p>

	<i>SHERD, UNKNOWN</i>
	<p>Use for unidentifiable sherd.</p>

	<i>STONEWARE</i>
	<p>A high fired ceramic that is vitreous or semi-vitreous, not translucent, and often made of clays that may or may not be highly refined. Stoneware is waterproof without glaze. Stoneware can be brown, buff, or white. Stoneware commonly has some speck and some particulate material such as sand or fine grog.</p>

	<i>TILE</i>
	<p>A thin slab, sometimes painted or glazed.</p>
	<p>Descriptors: Appliqué, Burnished/Polished, Burnt, Decorated, Decorated Anthro/Zoomorphic, Excised, Grooved, Incised, Maker's Mark, Perforated, Raised Relief</p>

	<i>TRANSFER PRINT</i>
	<p>A descriptor used when a ceramic vessel displays a pixilated pattern. Some transfer prints can be identified by the seams in the pattern where they overlap or line up incorrectly.</p>

	<i>VASE</i>
	A hollow container usually higher than it is wide.
	Descriptors: Appliqué, Burnished/Polished, Burnt, Cord Impressed, Corrugated, Decorated, Decorated Anthro/Zoomorphic, Excised, Grooved, Incised, Maker's Mark, Perforated, Raised Relief, Vessel

	<i>VESSEL</i>
	A hollow utensil used for holding liquids.
	Descriptors: Appliqué, Burnished/Polished, Burnt, Cord Impressed, Corrugated, Decorated, Decorated Anthro/Zoomorphic, Excised, Grooved, Incised, Maker's Mark, Perforated, Raised Relief, Vessel